

# PROLIAD

## LED LIGHTING

Light quality:



Color temperature:



Output: 1806 lm

Peak: 7292 cd

Power: 21,3 W

PF: 0,93



Product name:

**Inn-Ground 363 20 graden reflector**

Date and time:

**2-10-2020 9:04:42**

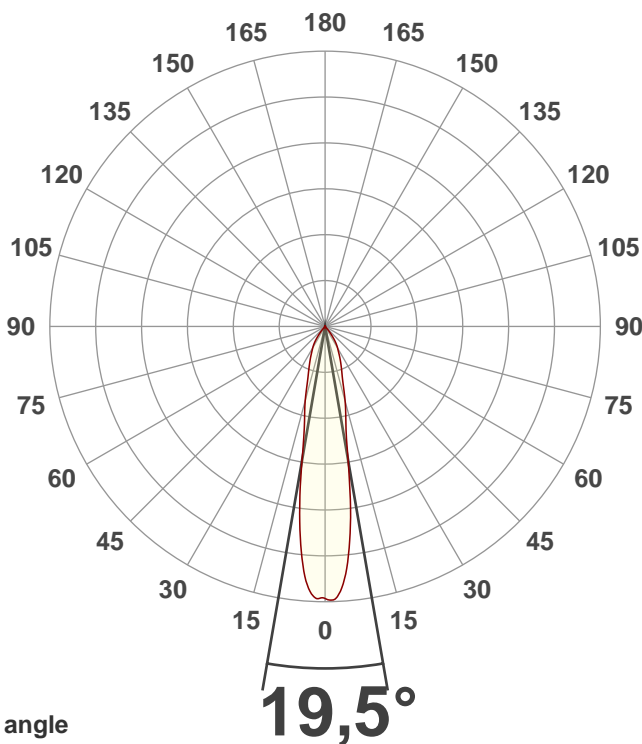
Item number:

**900 000363**

Additional information:

**-XTM19803020CCA**

**-70mm 20 graden reflector**



Beam angle

Color

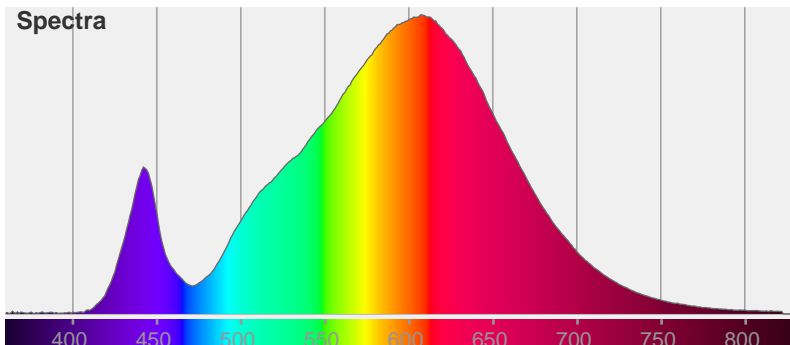


CIE1931

x: 0,445

y: 0,410

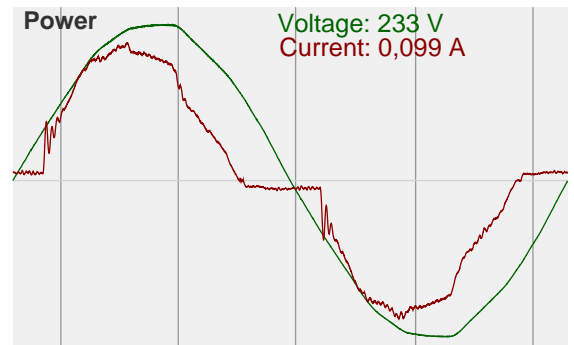
Spectra

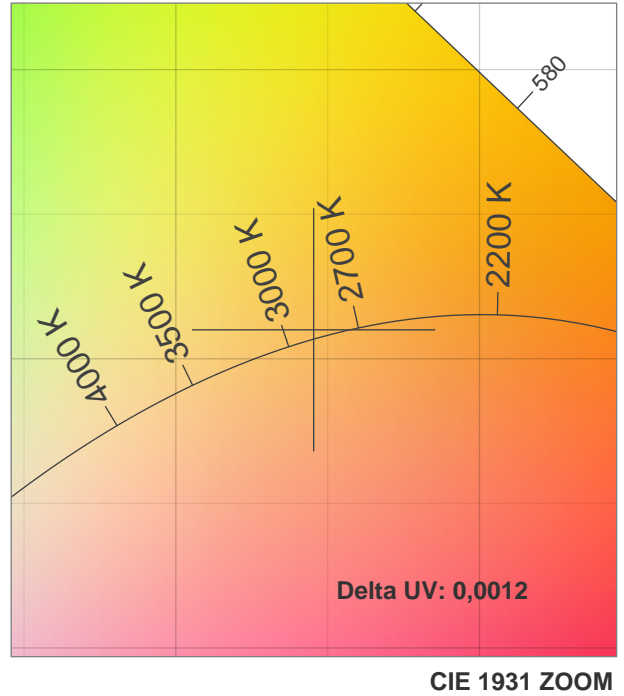
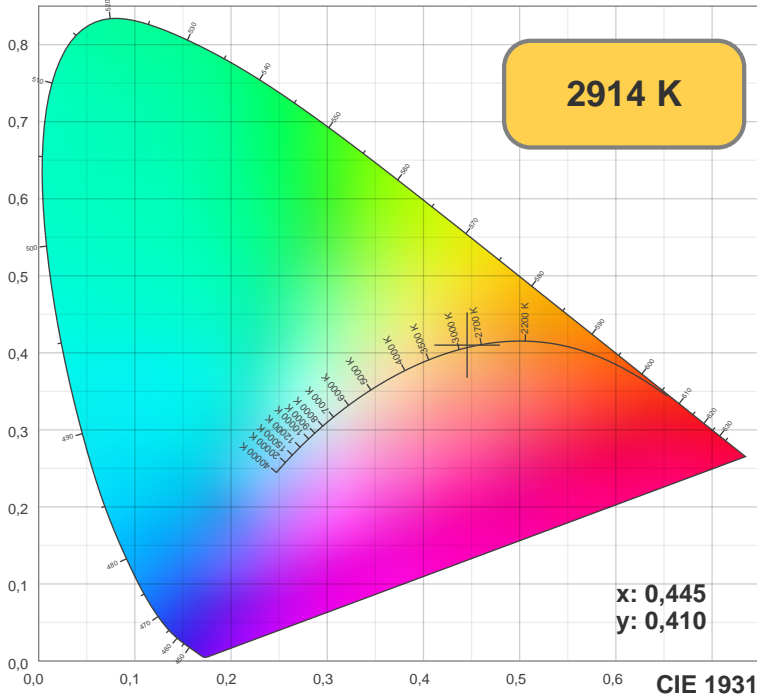


Power

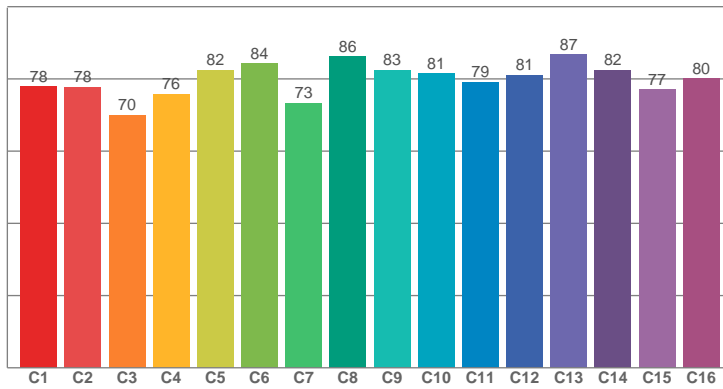
Voltage: 233 V

Current: 0,099 A

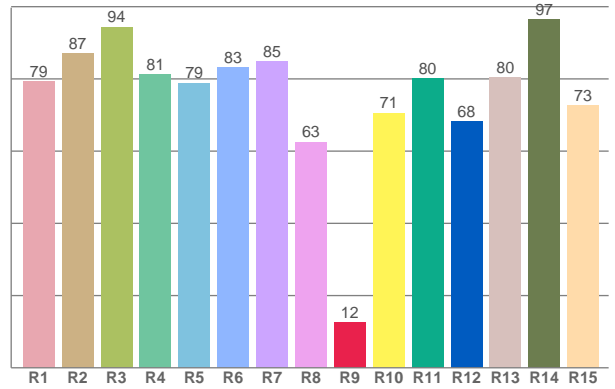




TM30: 79,7



CRI: 81,4 (R1-R8)



CRI R values, only R1-R8 are used to calculate final CRI value

R1	R2	R3	R4	R5	R6	R7	R8	R9	R10	R11	R12	R13	R14	R15
79,34	86,96	94,43	81,28	78,87	83,24	84,92	62,54	12,49	70,60	80,21	68,21	80,42	96,53	72,58

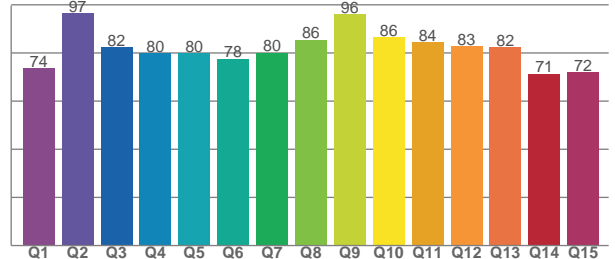
TM30 C values, 16 binned values out of total of 99 C values

C1	C2	C3	C4	C5	C6	C7	C8	C9	C10	C11	C12	C13	C14	C15	C16
77,83	77,78	70,01	75,82	82,50	84,34	73,33	86,23	82,52	81,45	79,15	81,11	86,86	82,50	77,17	80,22

CQS Q values

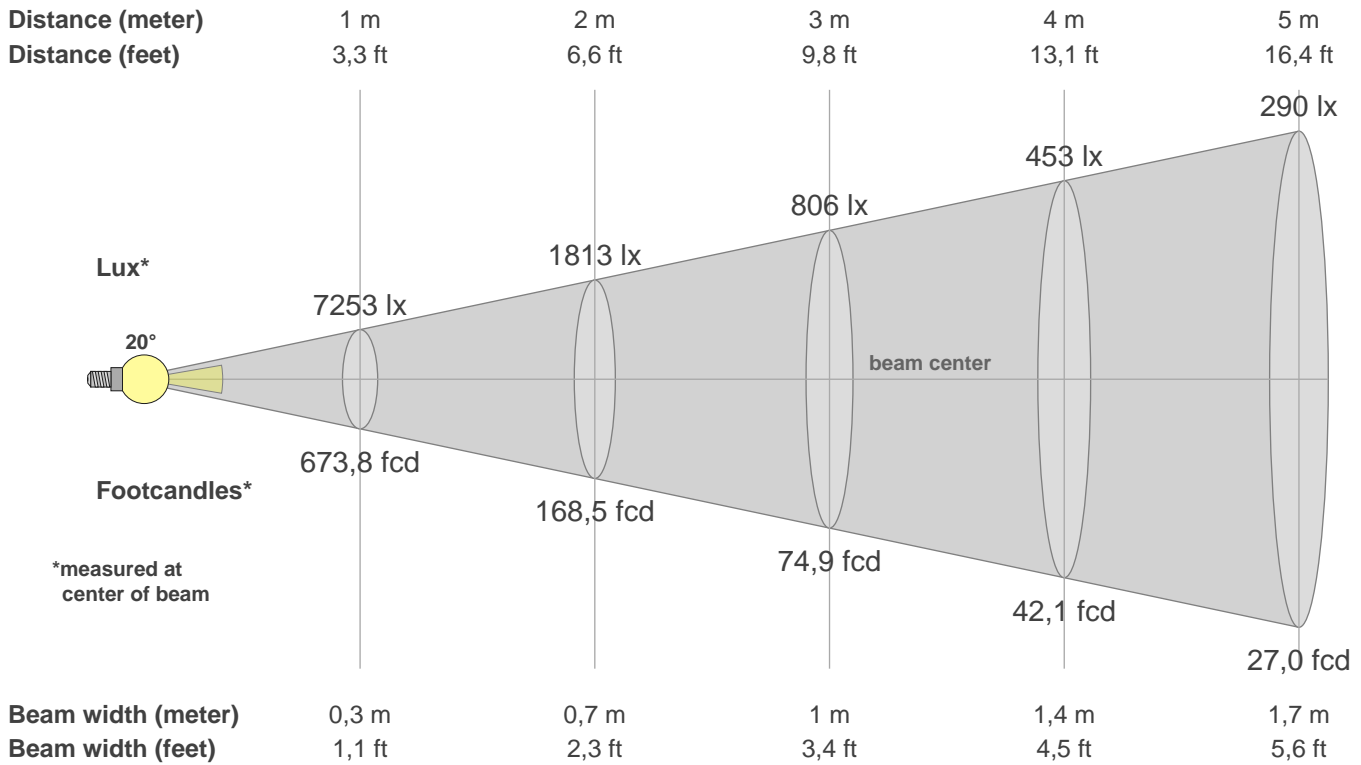
Q1	Q2	Q3	Q4	Q5	Q6	Q7	Q8	Q9	Q10	Q11	Q12	Q13	Q14	Q15
73,71	96,50	82,36	80,03	80,01	77,66	80,16	85,52	95,98	86,41	84,38	82,75	82,32	71,39	72,12

CQS: 80,6



### Color parameters

CCT	CRI	CRI R9	TM30 Rf	TM30 Rg	CQS	x	y	u	v	Duv
2914 K	81,4	12,5	79,7	99,0	80,6	0,4	0,4	0,3	0,3	0,0013



**Intensities in 0° c-plane**

0°	2°	4°	6°	8°	10°	12°	14°	16°	18°	20°	22°	24°	26°	28°	30°	32°	34°	36°	38°
7253	7263	6862	6024	4873	3507	2680	2256	1865	1526	1311	1146	1006	875	757	667	576	471	351	237
100%	100%	95%	83%	67%	48%	37%	31%	26%	21%	18%	16%	14%	12%	10%	9%	8%	6%	5%	3%

**Intensities in 0° c-plane**

0°	2°	4°	6°	8°	10°	12°	14°	16°	18°	20°	22°	24°	26°	28°	30°	32°	34°	36°	38°
7253	7263	6862	6024	4873	3507	2680	2256	1865	1526	1311	1146	1006	875	757	667	576	471	351	237
100%	100%	95%	83%	67%	48%	37%	31%	26%	21%	18%	16%	14%	12%	10%	9%	8%	6%	5%	3%

**Intensities in 180° c-plane**

0°	2°	4°	6°	8°	10°	12°	14°	16°	18°	20°	22°	24°	26°	28°	30°	32°	34°	36°	38°
7253	7236	6862	6045	4856	3479	2663	2238	1852	1513	1291	1124	983	857	745	659	570	469	351	237
100%	100%	95%	83%	67%	48%	37%	31%	26%	21%	18%	15%	14%	12%	10%	9%	8%	6%	5%	3%

**Intensities in 180° c-plane**

0°	2°	4°	6°	8°	10°	12°	14°	16°	18°	20°	22°	24°	26°	28°	30°	32°	34°	36°	38°
7253	7236	6862	6045	4856	3479	2663	2238	1852	1513	1291	1124	983	857	745	659	570	469	351	237
100%	100%	95%	83%	67%	48%	37%	31%	26%	21%	18%	15%	14%	12%	10%	9%	8%	6%	5%	3%

Beam angle 50%	Field angle 10%	Cutoff angle 2,5%	Intensity ratio in 120° cone	Intensity ratio in 90° cone
19,5°	56,8°	78,1°	99,1%	98,7%